

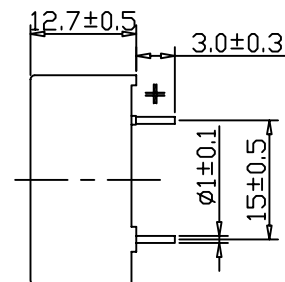
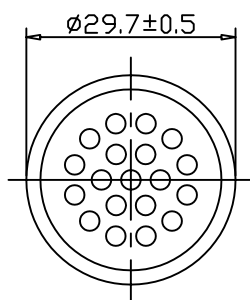
SANCO ELECTRONICS CO., LTD.

SPECIFICATION SHEET

Electrical specifications

Model	EMB-3008A
Power (Nominal)	0.1 Watts
Power (Maximum)	0.2 Watts
Impedance	$8 \pm 20\%$ ohms
Resonant Frequency	1200 ± 150 Hz
Sound pressure Level 0.1W, 0.1m Average at 0.8, 1.0, 1.2, 1.5KHz	80 ± 3 dB
Frequency Range	F0-10000 Hz
Housing Material	Noryl
Cone Material	Mylar
Operating Temperature Range	-20° to $+60^{\circ}$ C
Storage Temperature	-30° to $+70^{\circ}$ C
Weight	$8.5g \pm 5\%$

DIMENSIONS Unit:mm



SANCO

EMB-3008A

BLACK

Page 1/1

	NAME	DATE			
Drawing by					
Checked by					
Approved by					

SANCO ELECTRONICS CO., LTD.